

A. System Overview

B1. Cable Ties

B2. Cable Accessories

B3. Stainless Steel Ties

C1. Wiring Duct

C2. Surface Raceway

C3. Abrasion Protection

C4. Cable Management

D1. Terminals

D2. Power Connectors

D3. Grounding Connectors

E1. Labeling Systems

E2. Labels

E3. Pre-Printed & Write-On Markers

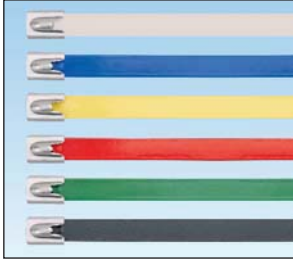
E4. Permanent Identification

E5. Lockout/Tagout & Safety Solutions

F. Index

Pan-Steel® Polyester Fully Coated Cable Ties – MLTFC Series

- Polyester coating available in six color options provides visual indication for easy identification in color-coding applications (heavy cross section only)
- Self-locking head design speeds installation and locks into place at any length along the tie body
- Polyester coating provides additional edge protection and prevents corrosion between dissimilar metals
- AISI 316 stainless steel for the most corrosive environments
- Available in standard, heavy, extra-heavy and super-heavy cross sections
- UV resistant, low smoke, halogen-free material
- Temperature tolerance -40°F (-40°C) to 302°F (150°C)



| Part Number | Max. Bundle Diameter | | Length* | | Color | Min. Loop Tensile Strength** | | Width | | Thickness^ | | Recommended Installation Tool*** | Std. Pkg. Qty. | Std. Ctn. Qty. |
|---------------------------------|----------------------|-----|---------|-----|-------|------------------------------|-----|-------|-----|------------|------|----------------------------------|----------------|----------------|
| | In. | mm | In. | mm | | Lbs. | N | In. | mm | In. | mm | | | |
| Standard Cross Section^^ | | | | | | | | | | | | | | |
| MLTFC2S-CP316 | 2.0 | 51 | 7.9 | 201 | Black | 100 | 445 | 0.18 | 4.6 | 0.010 | 0.25 | GS4MT, HTMT, PPTMT, ST2MT | 100 | 500 |
| MLTFC4S-CP316 | 4.0 | 102 | 14.3 | 362 | Black | 100 | 445 | 0.18 | 4.6 | 0.010 | 0.25 | | 100 | 500 |
| MLTFC6S-CP316 | 6.0 | 152 | 20.5 | 521 | Black | 100 | 445 | 0.18 | 4.6 | 0.010 | 0.25 | | 100 | 500 |
| MLTFC8S-CP316 | 8.0 | 203 | 26.8 | 679 | Black | 100 | 445 | 0.18 | 4.6 | 0.010 | 0.25 | | 100 | 500 |

| | | | | | | | | | | | | | | |
|------------------------------|-----|-----|------|-----|--------|-----|------|------|-----|-------|------|----------------------------------|----|-----|
| Heavy Cross Section^^ | | | | | | | | | | | | | | |
| MLTFC2H-LP316RD | 2.0 | 51 | 7.9 | 201 | Red | 250 | 1112 | 0.31 | 7.9 | 0.010 | 0.25 | GS4MT, ST2MT, HTMT, PPTMT, PBTMT | 50 | 250 |
| MLTFC4H-LP316RD | 4.0 | 102 | 14.3 | 362 | Red | 250 | 1112 | 0.31 | 7.9 | 0.010 | 0.25 | | 50 | 250 |
| MLTFC6H-LP316RD | 6.0 | 152 | 20.5 | 521 | Red | 250 | 1112 | 0.31 | 7.9 | 0.010 | 0.25 | | 50 | 250 |
| MLTFC2H-LP316YL | 2.0 | 51 | 7.9 | 201 | Yellow | 250 | 1112 | 0.31 | 7.9 | 0.010 | 0.25 | | 50 | 250 |
| MLTFC4H-LP316YL | 4.0 | 102 | 14.3 | 362 | Yellow | 250 | 1112 | 0.31 | 7.9 | 0.010 | 0.25 | | 50 | 250 |
| MLTFC6H-LP316YL | 6.0 | 152 | 20.5 | 521 | Yellow | 250 | 1112 | 0.31 | 7.9 | 0.010 | 0.25 | | 50 | 250 |
| MLTFC2H-LP316GR | 2.0 | 51 | 7.9 | 201 | Green | 250 | 1112 | 0.31 | 7.9 | 0.010 | 0.25 | | 50 | 250 |
| MLTFC4H-LP316GR | 4.0 | 102 | 14.3 | 362 | Green | 250 | 1112 | 0.31 | 7.9 | 0.010 | 0.25 | | 50 | 250 |
| MLTFC6H-LP316GR | 6.0 | 152 | 20.5 | 521 | Green | 250 | 1112 | 0.31 | 7.9 | 0.010 | 0.25 | | 50 | 250 |
| MLTFC2H-LP316BU | 2.0 | 51 | 7.9 | 201 | Blue | 250 | 1112 | 0.31 | 7.9 | 0.010 | 0.25 | | 50 | 250 |
| MLTFC4H-LP316BU | 4.0 | 102 | 14.3 | 362 | Blue | 250 | 1112 | 0.31 | 7.9 | 0.010 | 0.25 | | 50 | 250 |
| MLTFC6H-LP316BU | 6.0 | 152 | 20.5 | 521 | Blue | 250 | 1112 | 0.31 | 7.9 | 0.010 | 0.25 | | 50 | 250 |
| MLTFC2H-LP316WH | 2.0 | 51 | 7.9 | 201 | White | 250 | 1112 | 0.31 | 7.9 | 0.010 | 0.25 | | 50 | 250 |
| MLTFC4H-LP316WH | 4.0 | 102 | 14.3 | 362 | White | 250 | 1112 | 0.31 | 7.9 | 0.010 | 0.25 | | 50 | 250 |
| MLTFC6H-LP316WH | 6.0 | 152 | 20.5 | 521 | White | 250 | 1112 | 0.31 | 7.9 | 0.010 | 0.25 | | 50 | 250 |
| MLTFC2H-LP316 | 2.0 | 51 | 7.9 | 201 | Black | 250 | 1112 | 0.31 | 7.9 | 0.010 | 0.25 | | 50 | 250 |
| MLTFC4H-LP316 | 4.0 | 102 | 14.3 | 362 | Black | 250 | 1112 | 0.31 | 7.9 | 0.010 | 0.25 | | 50 | 250 |
| MLTFC6H-LP316 | 6.0 | 152 | 20.5 | 521 | Black | 250 | 1112 | 0.31 | 7.9 | 0.010 | 0.25 | | 50 | 250 |
| MLTFC8H-LP316 | 8.0 | 203 | 26.8 | 679 | Black | 250 | 1112 | 0.31 | 7.9 | 0.010 | 0.25 | | 50 | 250 |

| | | | | | | | | | | | | | | |
|------------------------------------|-----|-----|------|-----|-------|-----|------|------|------|-------|------|-----------------------------|----|-----|
| Extra-Heavy Cross Section^^ | | | | | | | | | | | | | | |
| MLTFC4EH-LP316 | 4.0 | 102 | 17.1 | 434 | Black | 300 | 1335 | 0.50 | 12.7 | 0.010 | 0.25 | ST2MT, RT2HT, RT2HTN, PBTMT | 50 | 250 |
| MLTFC6EH-LP316 | 6.0 | 152 | 23.4 | 594 | Black | 300 | 1335 | 0.50 | 12.7 | 0.010 | 0.25 | | 50 | 250 |
| MLTFC8EH-LP316 | 8.0 | 203 | 29.7 | 754 | Black | 300 | 1335 | 0.50 | 12.7 | 0.010 | 0.25 | | 50 | 250 |

| | | | | | | | | | | | | | | |
|------------------------------------|-----|-----|------|-----|-------|-----|------|------|------|-------|------|----------------------|----|-----|
| Super-Heavy Cross Section^^ | | | | | | | | | | | | | | |
| MLTFC4SH-LP316 | 4.0 | 102 | 17.1 | 434 | Black | 450 | 2000 | 0.63 | 15.9 | 0.015 | 0.38 | RT2HT, RT2HTN, PBTMT | 50 | 250 |
| MLTFC6SH-LP316 | 6.0 | 152 | 23.4 | 594 | Black | 450 | 2000 | 0.63 | 15.9 | 0.015 | 0.38 | | 50 | 250 |
| MLTFC8SH-LP316 | 8.0 | 203 | 29.7 | 754 | Black | 450 | 2000 | 0.63 | 15.9 | 0.015 | 0.38 | | 50 | 250 |

*Other lengths available, contact Panduit Customer Service.

**Per SAE Standard AS23190/3 (formerly MIL). For additional details, refer to page B3.32.

***For information on installation tools, refer to pages B3.14 – B3.16.

^Base material less coating. ^^Minimum bundle diameter is .50"(12.7mm). ^^Minimum bundle diameter is 1.0"(25.4mm).